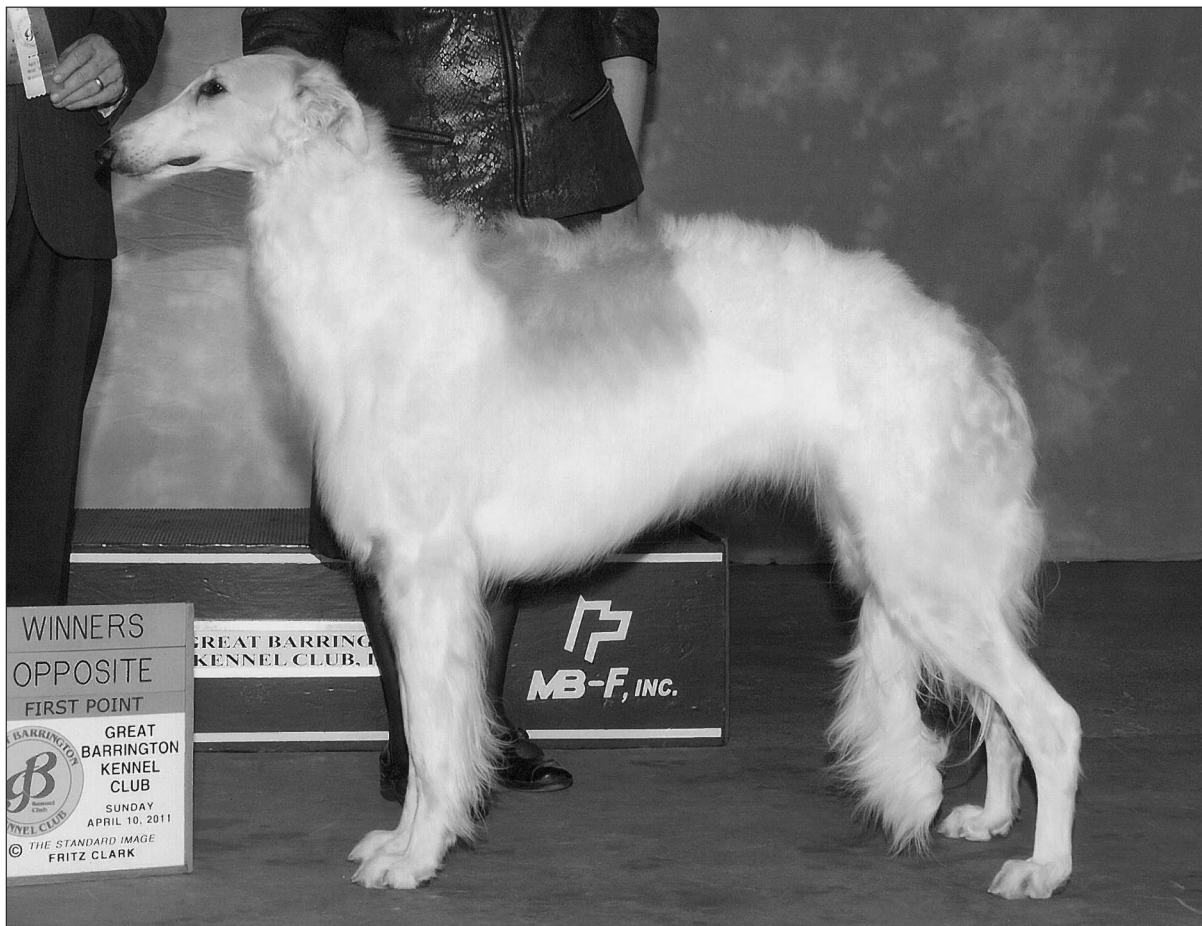


ROSCOMMON



Roscommon New York State of Mind

March 23, 2009

Breeder(s): Colleen Boyle & Pauline Coe

Female

Red and White

Colleen Boyle & Pauline Coe

1080 Garfield Rd.

East Nassau, NY 12062

518-733-0880; roscommonborzoi@gmail.com

Cedar is the dream we had when we bred her outstanding parents. She is pointed in conformation and took time off to have her own exceptional litter with Ch. Roscommon Ferlinka Zulu Whiskey.

FCI Int. Fin. Est. Rus. Ltu. Am. Ch. Phaedra Rafiki, ROM-C
Ch. Korsakov Fired Up's Makimono
Lead Vogue Sky Run JP Carry

Ch. Korsakov's Quintessential

Int. Fin. Ltu. Est. Norw. Dan. Swe. Ch. LtuW-00 BaltW-00 FinW-04 Darbaschan's Scotch Amber
BIS Am. Can. Ch. Staraja Russa Bianca Korsakov
C.I.B., Fin. Swe. Norw. Est. Ch. FinW-01, FinW-04, EUVW-06, EEW-00 Borscana Helter Skelter

Ch. Zimistrajia Mozart Play for SV'shin, JC, FCh, ROM-C (Swedish Import)
Ch. Tufftoo Amadeus
Tuff Allthatjazz of Dacha

Ch. Korsakov New York Diva Roscommon

MSBIS Ch. Sky Run Winter Nova
Lead Vogue Sky Run JP Carry
Int. Ch. Shadow Acres Mikita V Waco